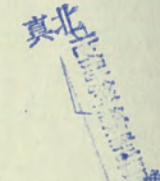
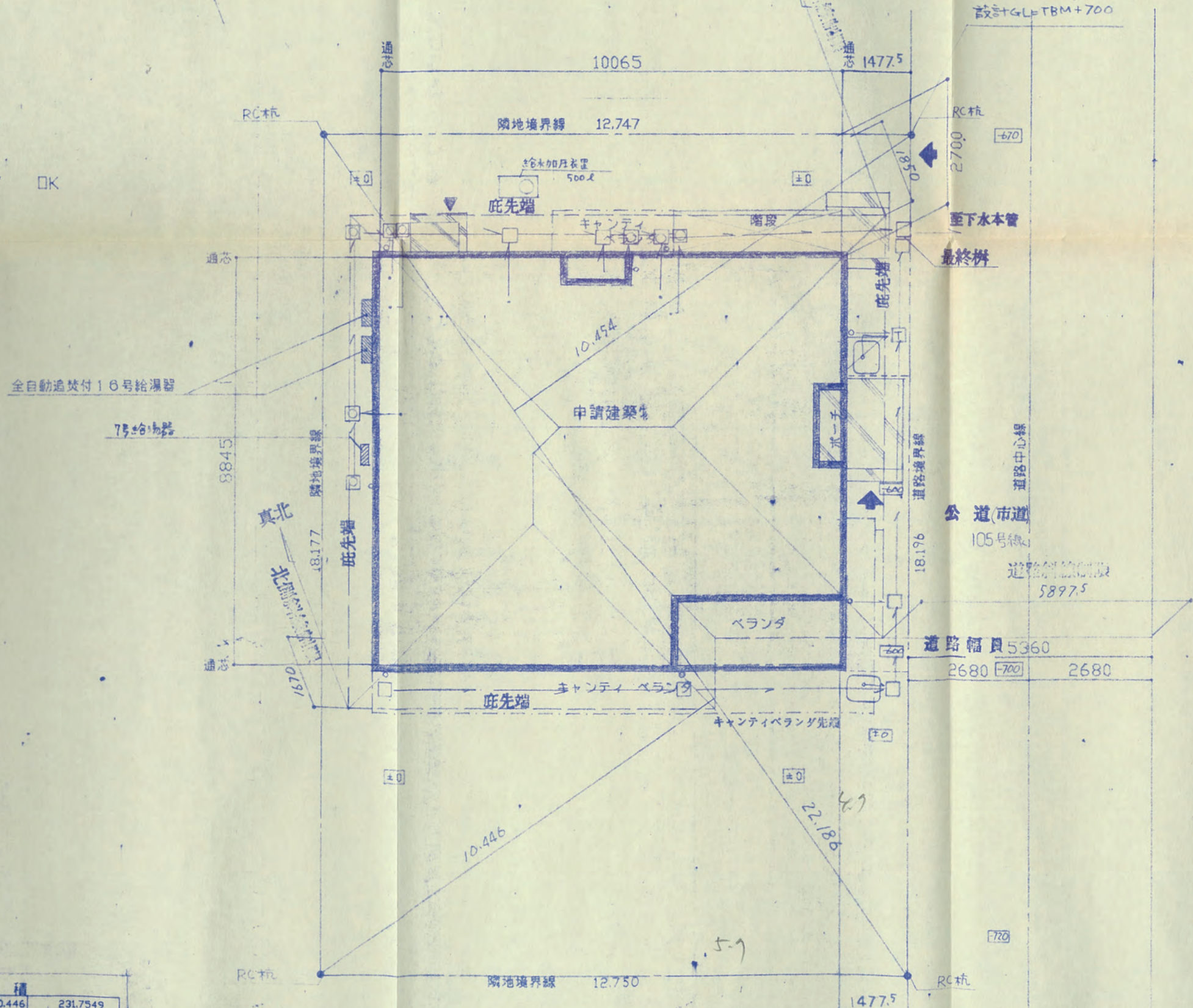


A4



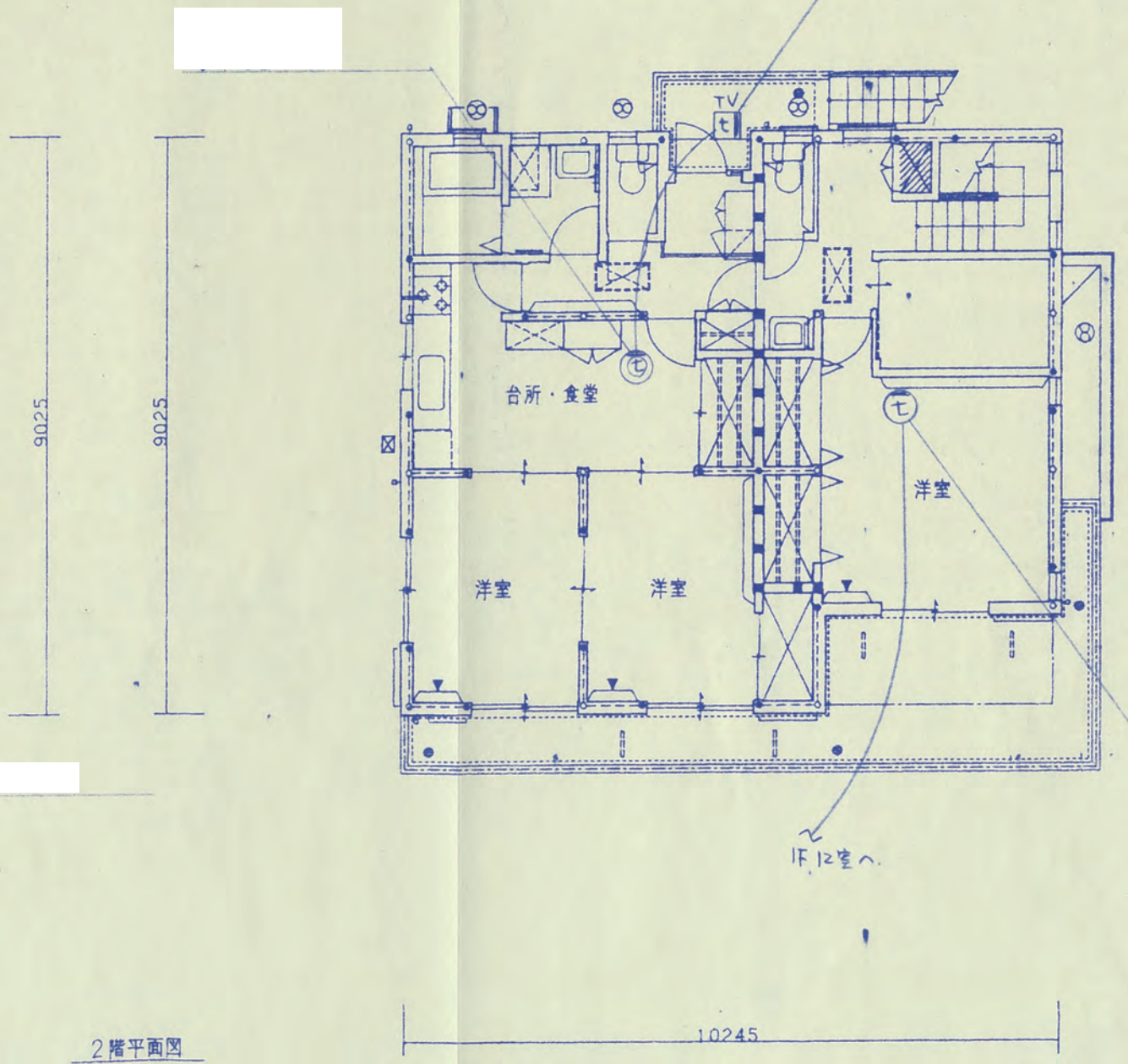
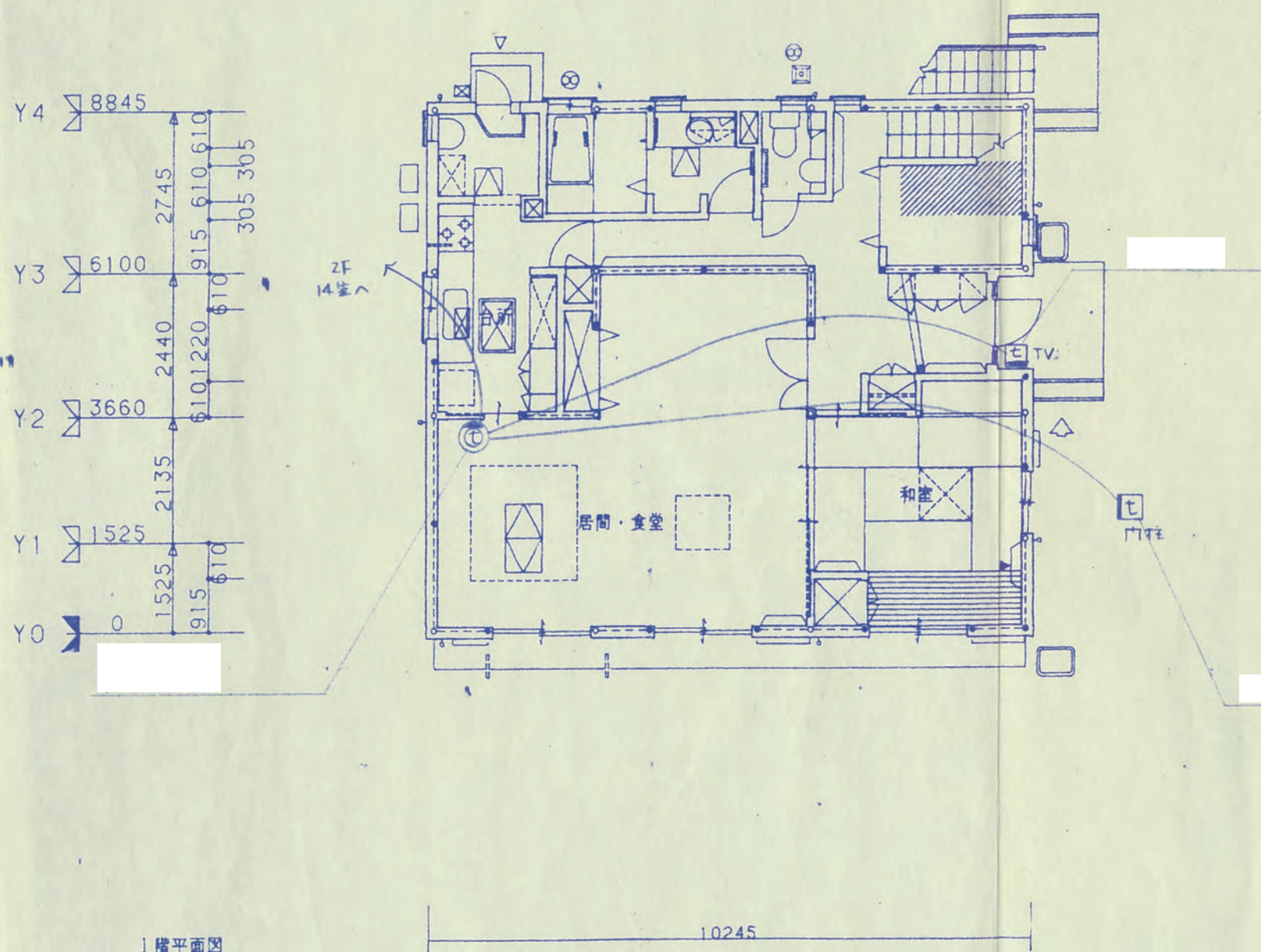
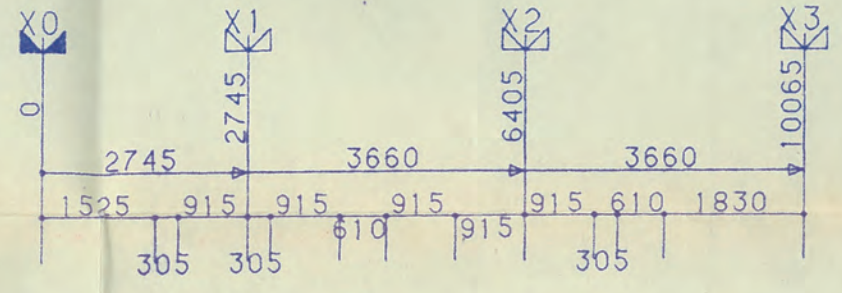
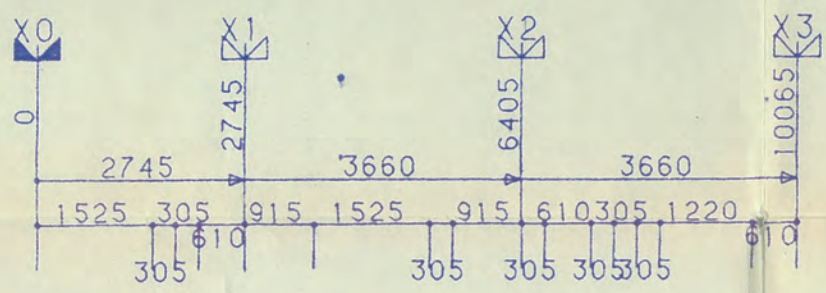
側斜線制限
 $1.940 \times 0.6 + 5.000 = 6.164 > 5.997 \quad \square K$



求積

1	22.186	10.446	231.7549
2	22.186	10.454	231.9324

A4



1階平面図

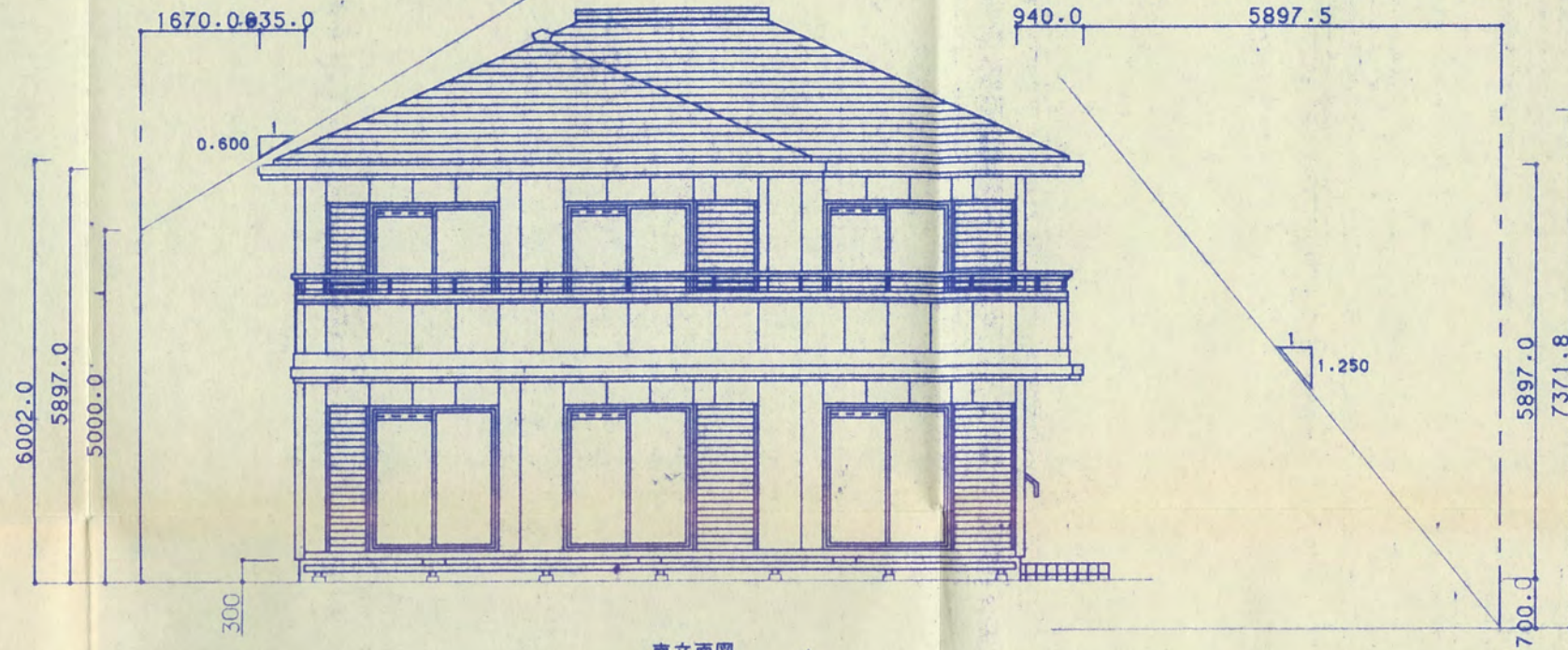
2階平面図

北側斜屋計算

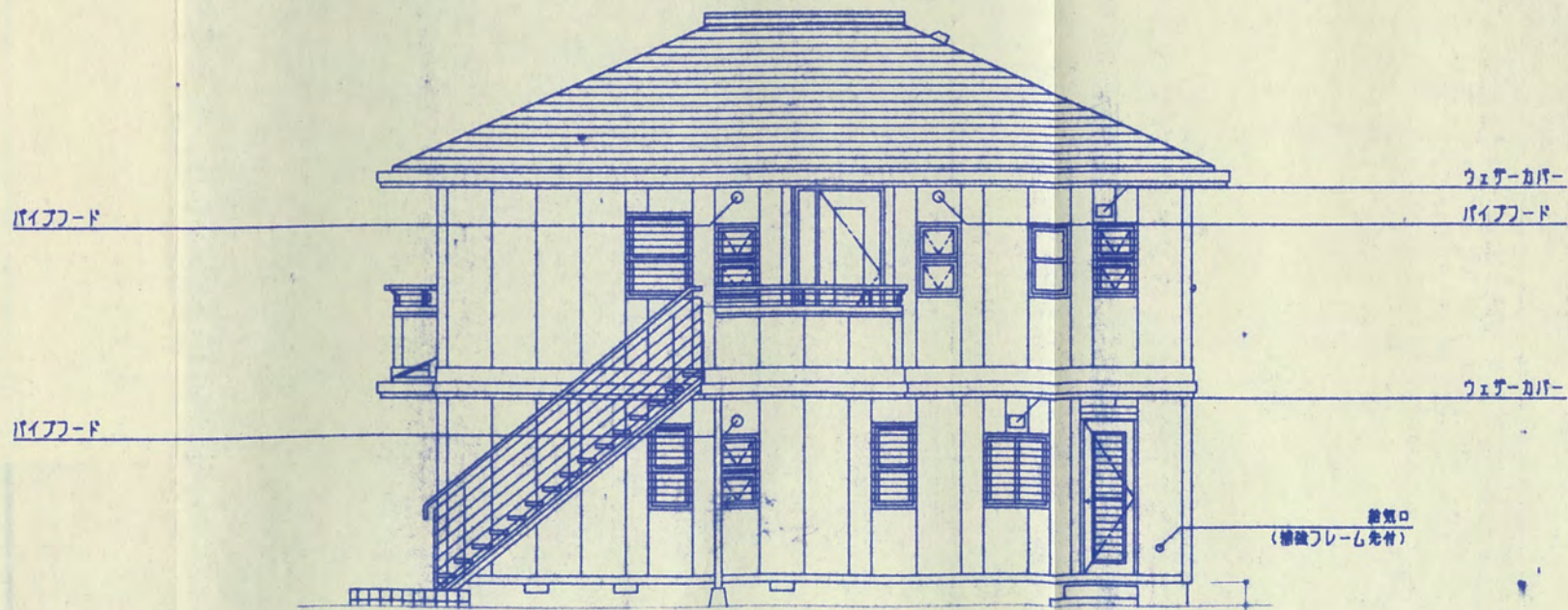
$1670 \times 0.6 + 5000 = 6002 > 5897 \therefore OK$

道路斜屋計算

$5897.5 \times 1.25 = 7371.8 > 5897 + 700 = 6597 \therefore OK$



南立面図

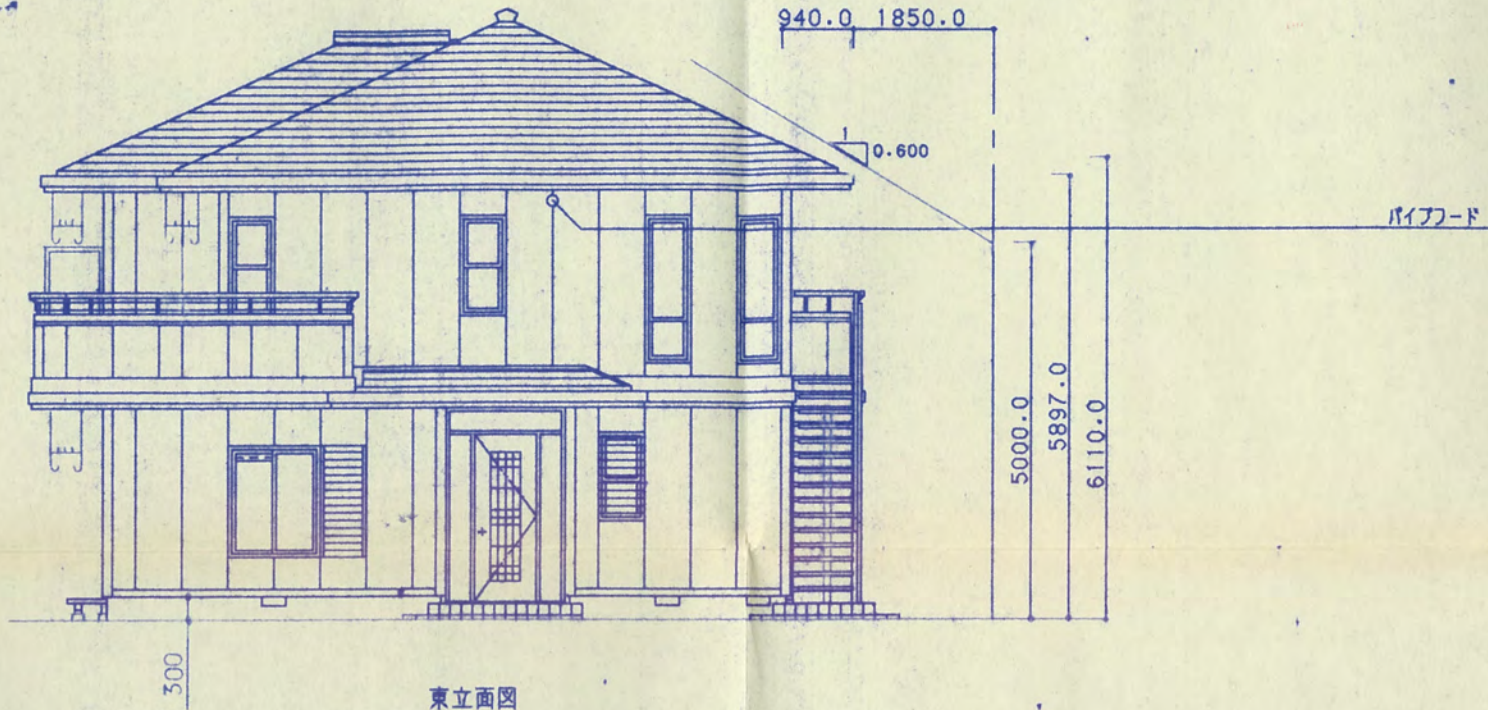


北立面図

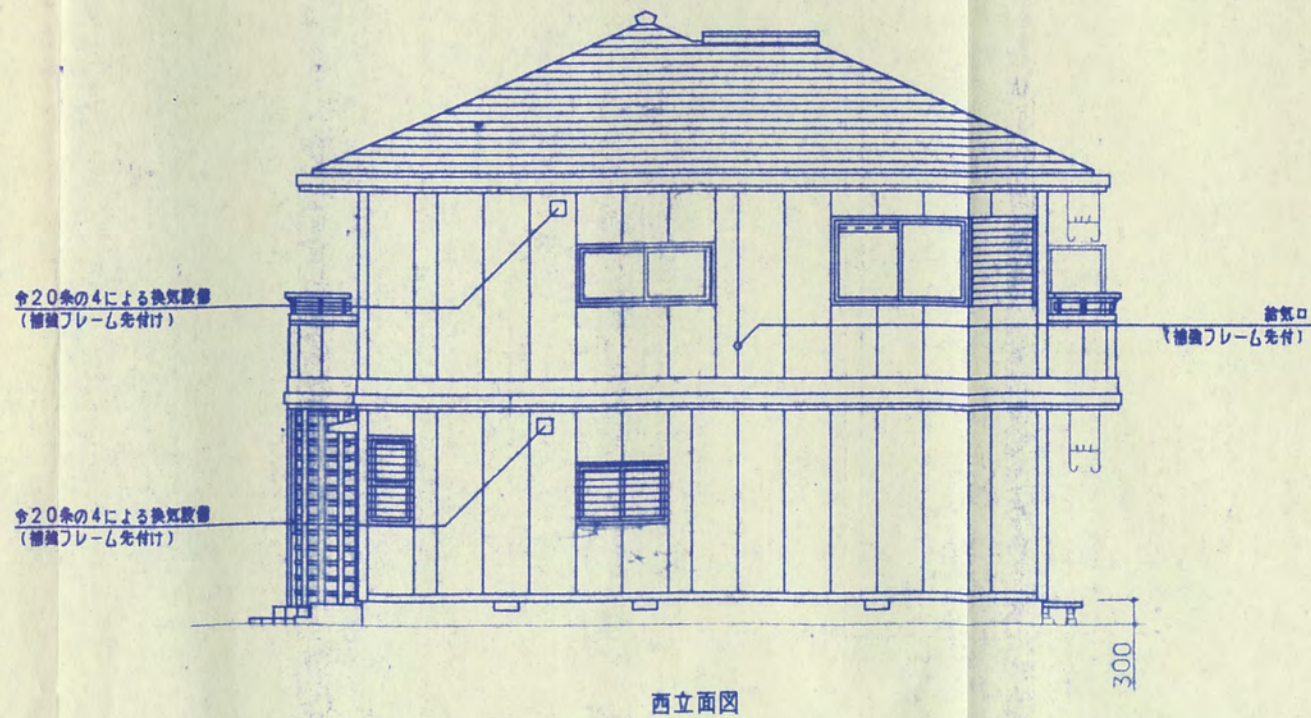
300

北側斜線制限

$$1850 \times 0.6 + 5000 = 6110 > 5897 \text{ OK}$$



東立面図



西立面図