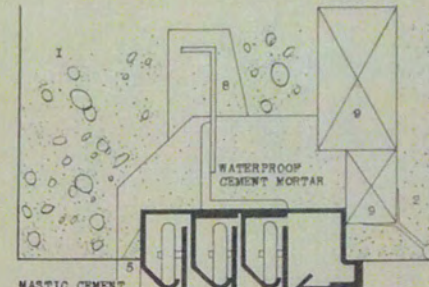
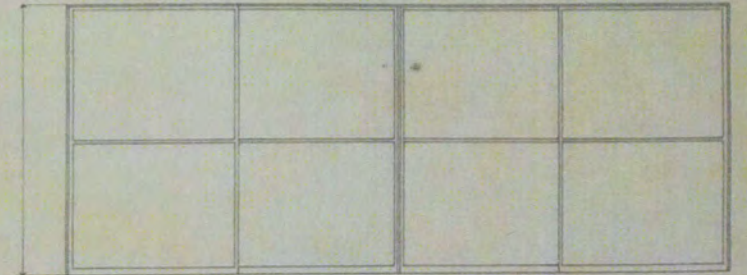


TYPE GENERALLY USED IN REINFORCED CONCRETE CONSTRUCTION.

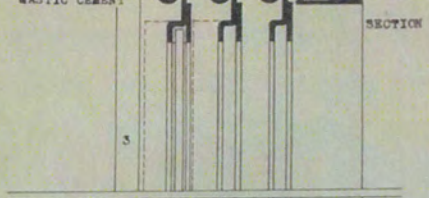
PATENTED BY THE FUJI SASH COMPANY OF JAPAN.



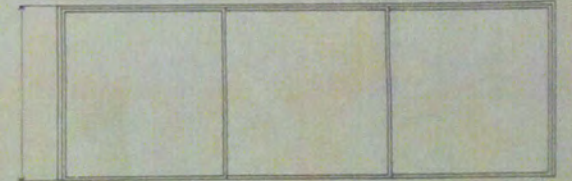
SECTION THROUGH HEAD



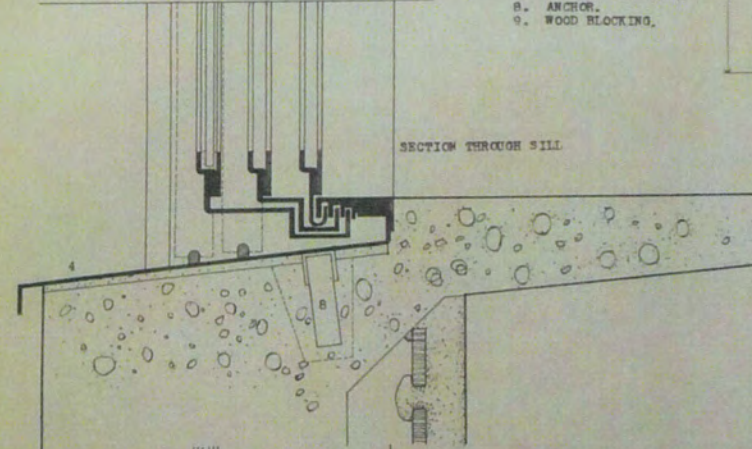
ELEVATION OF 4 UNITS



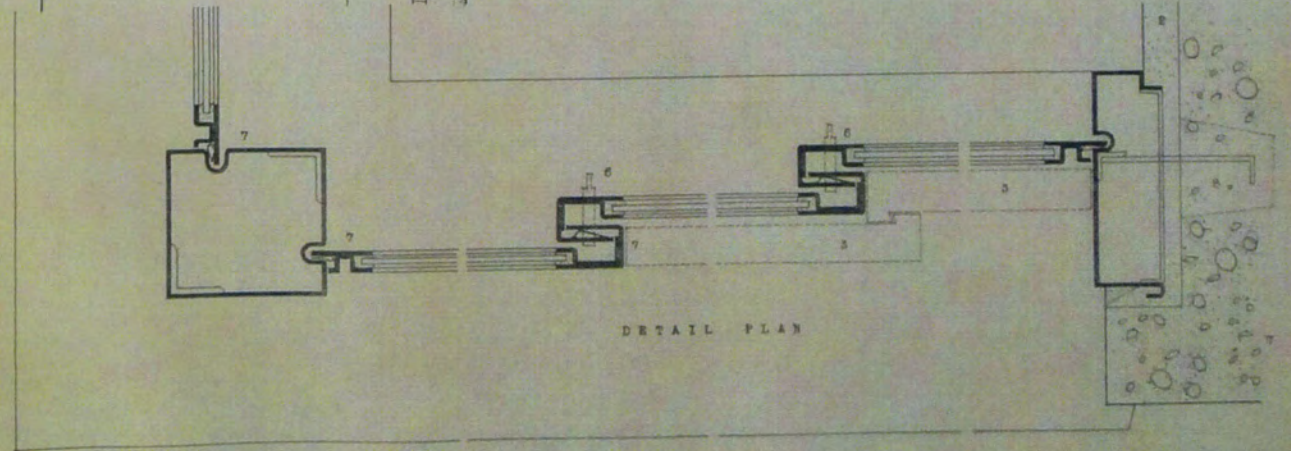
SECTION THROUGH SILL



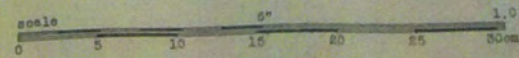
ELEVATION OF 3 UNITS



ELEVATION OF 2 UNITS



DETAIL PLAN



1.0'

80cm

0 5 10 15 20 25 30

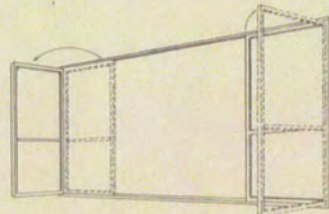
0 5 10 15 20 25 30

SIMILAR IN CONSTRUCTION TO THE SLIDING STEEL SASH PATENTED BY THE FUJI SASH COMPANY OF JAPAN.

A SPECIAL TYPE WHICH CAN BE OPENED LIKE A CASSEMENT SASH TO AFFORD A 100% OPENING



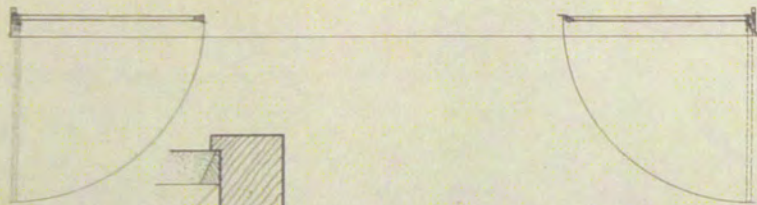
ELEVATION



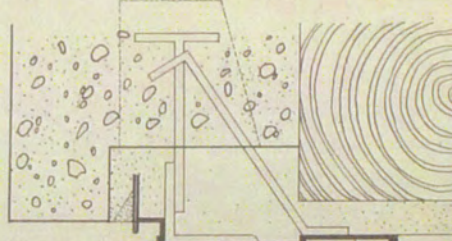
PERSPECTIVE



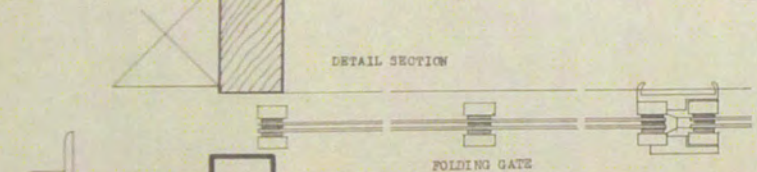
PLAN



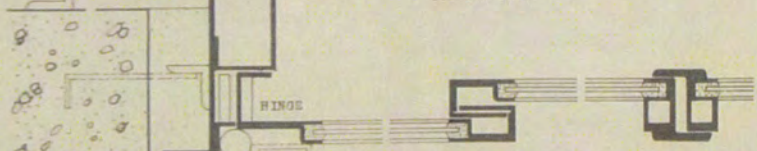
DETAIL SECTION



SECTION THROUGH HEAD

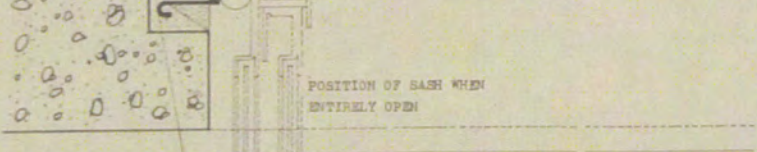


FOLDING GATE

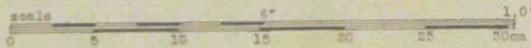


HINGE

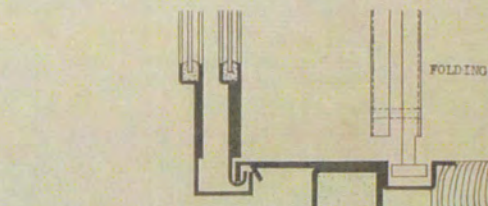
POSITION OF SASH WHEN ENTIRELY OPEN



DETAIL PLAN



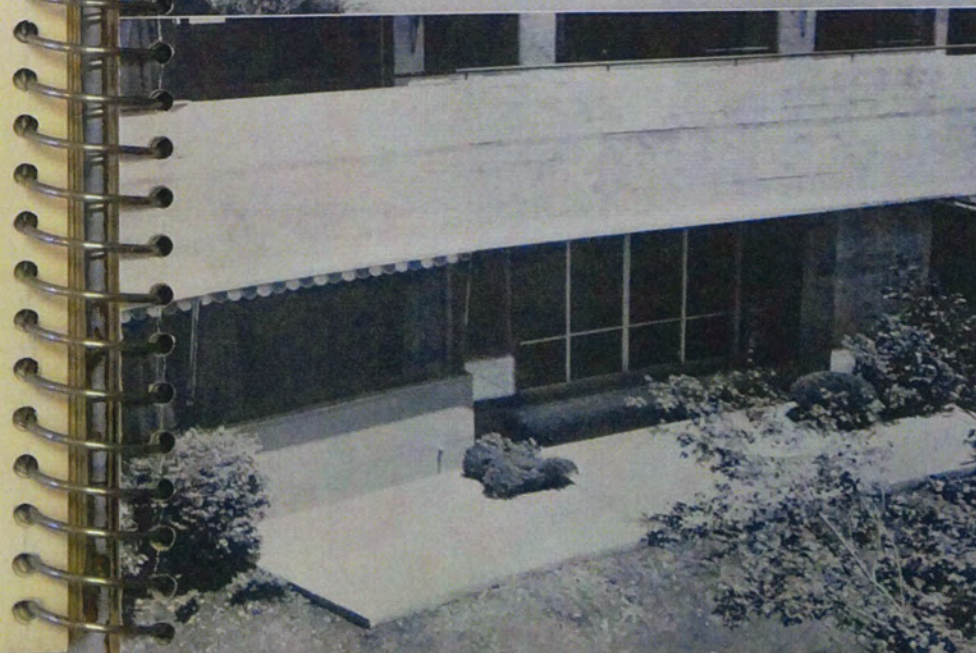
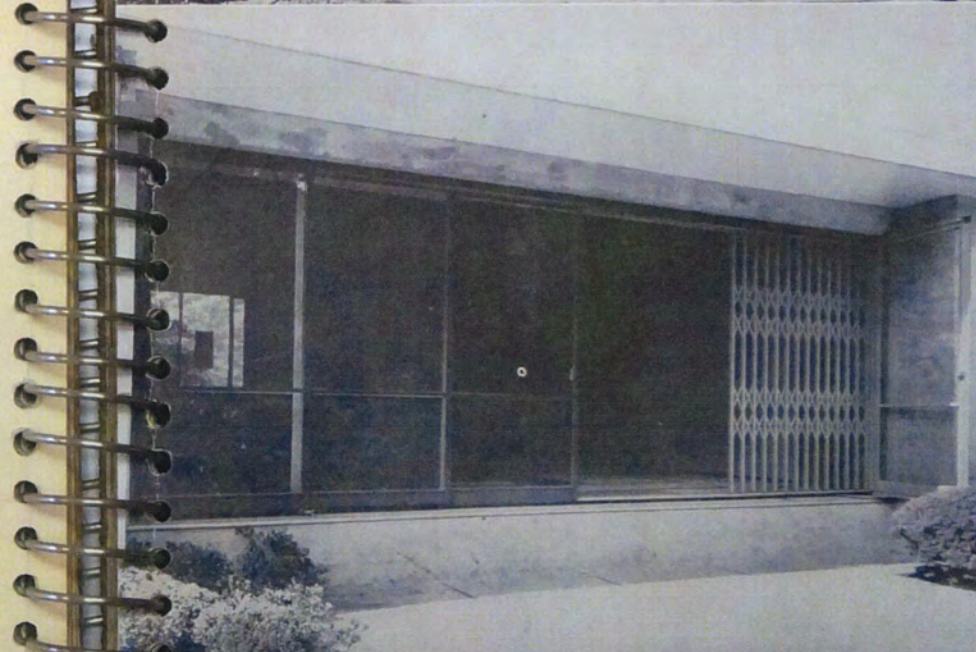
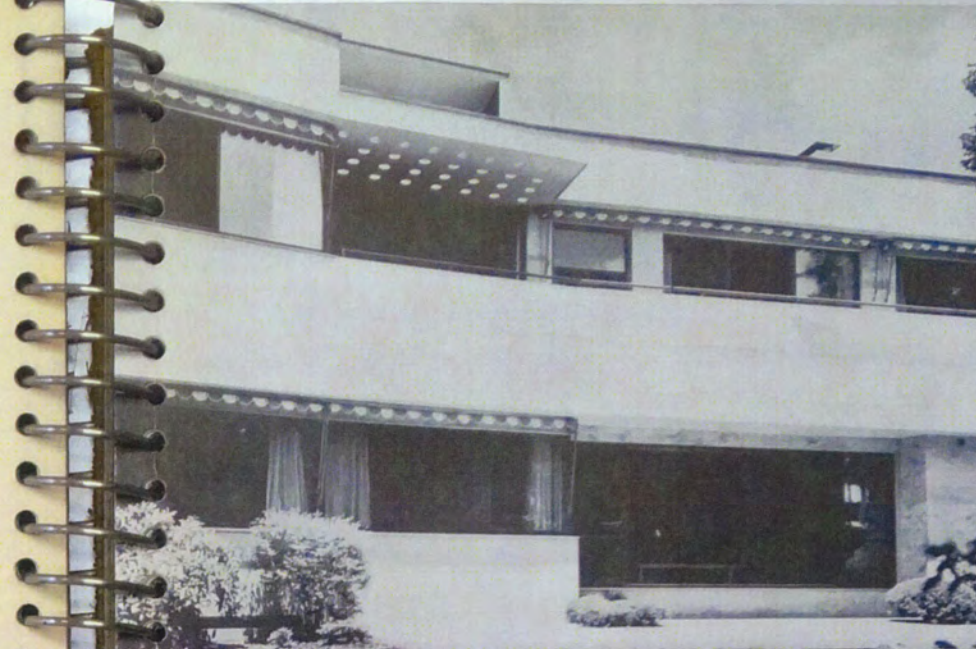
THIS SASH HAS THE ADVANTAGE OF SLIDING IN THE ORDINARY MANNER PLUS THE FACILITY OF ALL SECTIONS OPENING OUT TOGETHER. THE FOLDING GATE IS AN ANTI-BURGLAR PRECAUTION.

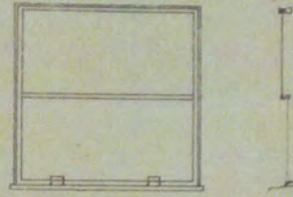
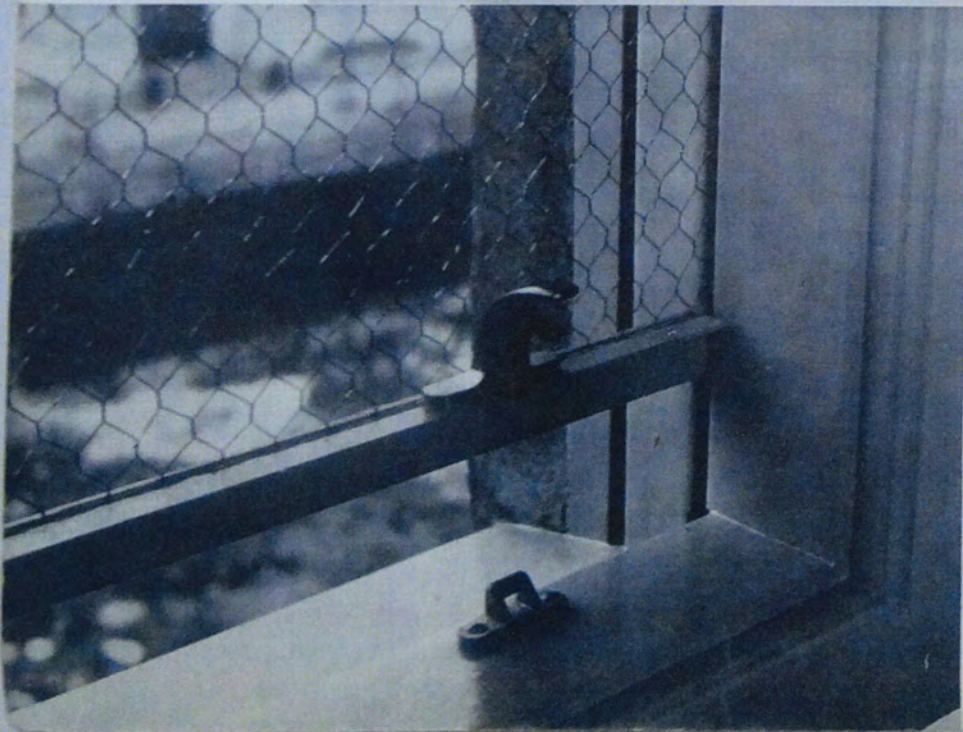
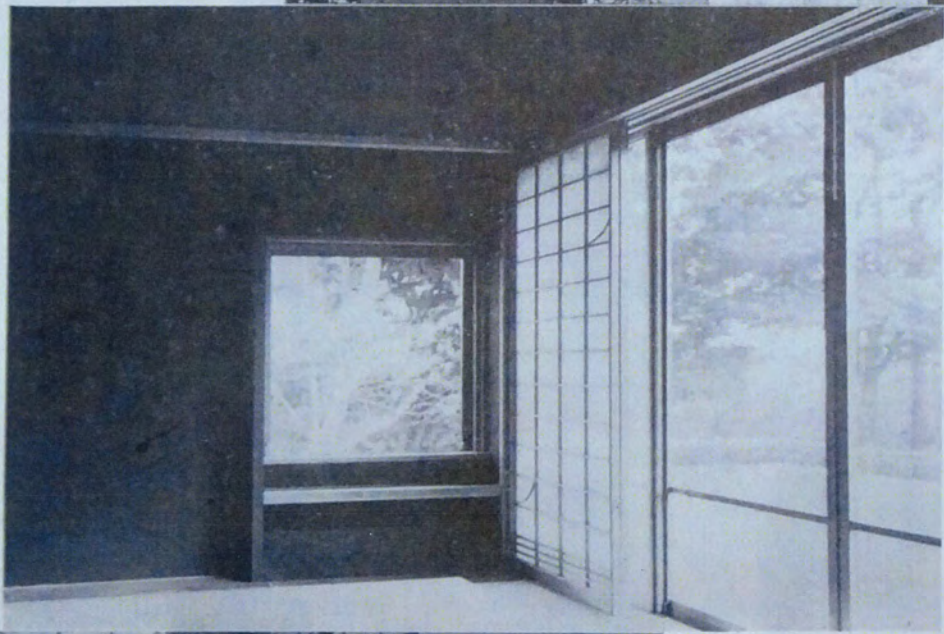
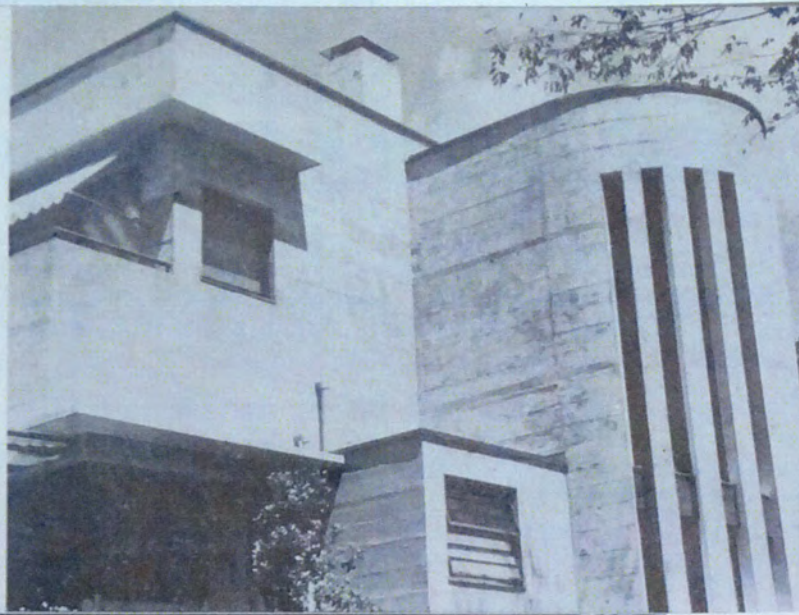


FOLDING GATE

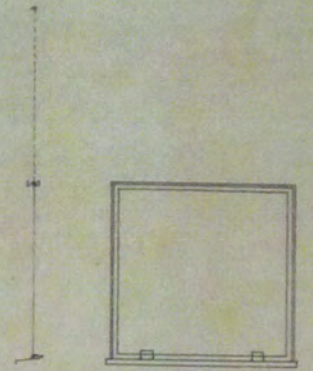


SECTION THROUGH SILL

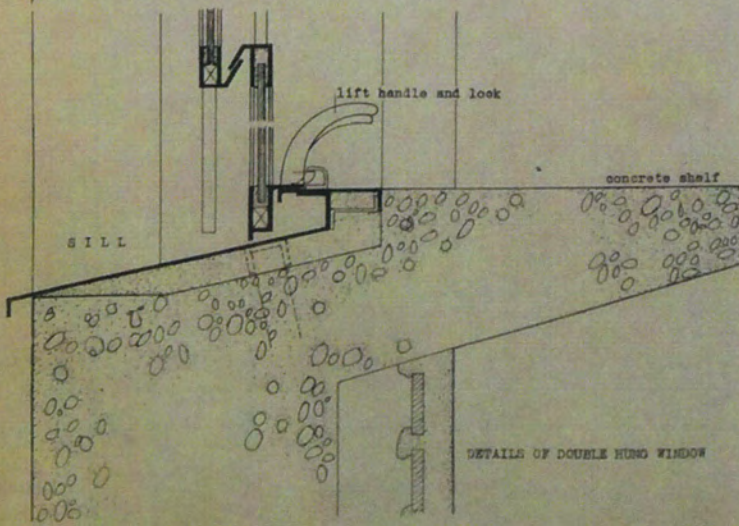
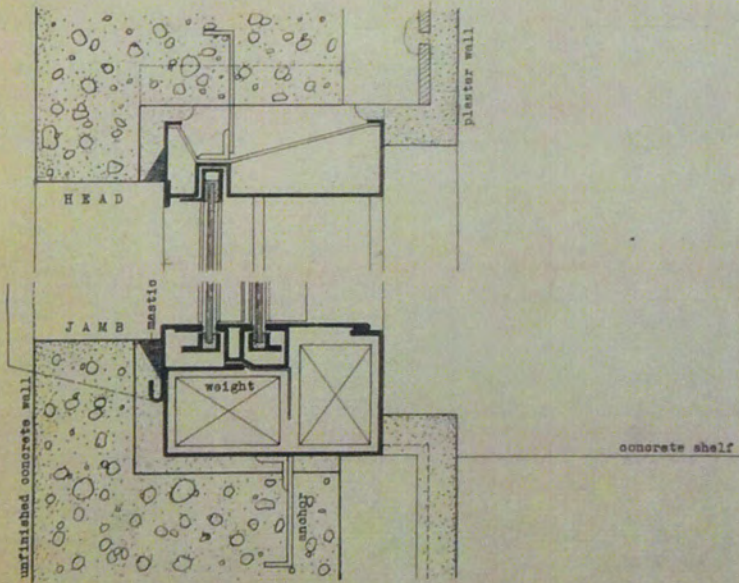




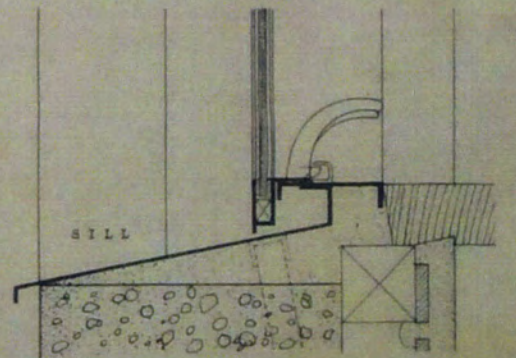
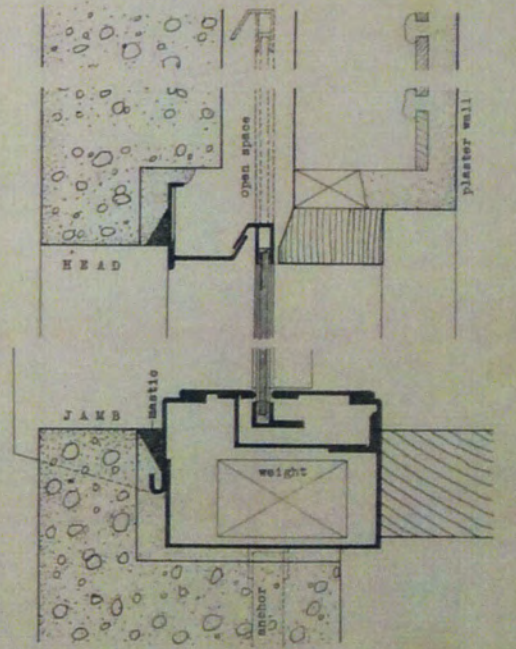
DOUBLE HUNG WINDOW



LIFT TYPE



DETAILS OF DOUBLE HUNG WINDOW



DETAILS OF LIFT TYPE



